

The Bayeux Lodge



Bontoft Avenue, Hull, East Yorkshire, HU5 4HF, United Kingdom.
T: 01482 475105 F: 01482 494301 E: sales@normandy-holiday-homes.co.uk



NATIONAL CARAVAN
COUNCIL LIMITED



The Bayeux Lodge

STANDARD FEATURES

- 'Canoxel' tongue and grooved cladding
- Sandwich Insulation to floor construction
- Fibre glass roof insulation
- Extra thick 'Kingspan' wall insulation
- Double glazed windows and doors with 'Velux' roof light to the kitchen
- Feature glazing to lounge
- Extractor fan to kitchen
- Built under domestic oven
- Integral fridge freezer
- Pitched pantile or metro tiled roof
- Three piece domestic lounge seating with bed action settee
- Feature electric lounge fire
- Exterior feature lighting to side entrance and over the front gable when French doors are fitted
- Free standing dark stained dining table and chairs in natural wood
- Occasional natural wood furniture in dark stain
- Domestic internal doors
- Extractor fan to shower room

OPTIONAL UPGRADES

- Fusion chassis
- Upvc, Timber or Resitex external claddings
- Pre galvanised chassis
- BS 3632 (2005) for long licence all year round occupancy
- Hinged bed with storage
- Environmental external colours

'Made with Pride'

The Bayeux Lodge model range has swiftly developed into one of our foundation products for the Normandy range of lodges.

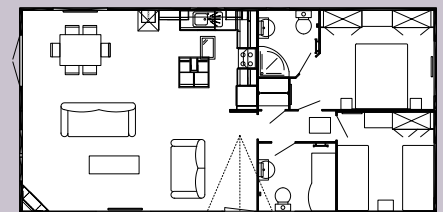
With truly a pan European feel the Bayeux range offers single homes at 13ft wide and both 16ft and 20ft wide twin versions truly offering something for everyone.

With up to date colour schemes and design features the Bayeux is the embodiment of style and comfort, the lounge comprises a three piece sofa and swivel chair arrangement the Bayeux has plenty of room for all. The kitchen not only creates a friendly and cosmopolitan feel with its open plan island base unit design it is also packed with practicalities for easy living, including, integrated fridge freezer, integrated dishwasher and dependant on model, either an integral or free standing washer is also provided, making sure your time spent in your Bayeux will be fun filled and relaxing.

The Bayeux lodge not only provides eye catching features internally, structurally it delivers too, with four seasons insulation and full central heating as standard using thermostatic radiator valves coupled with full double glazed windows and doors including a 'Velux' roof light to the kitchen the Bayeux is more than capable of keeping you comfortable during the seasons cold spells, so whether you are looking for 1, 2 or 3 bedrooms the Bayeux range caters for all tastes and demands of the season.

MODEL LIST

- 40 x 13 - 2 bed
- 40 x 13 - 3 bed
- 40 x 16 - 1 bed
- 40 x 16 - 2 bed
- 40 x 16 - 3 bed
- 40 x 20 - 2 bed*
- 40 x 20 - 3 bed



* floor plan as shown above.

