



Lodges

by normandy



www.normandy-holiday-homes.co.uk



About us

4

Bespoke design service

5

The Carrick

6-7

Our flagship lodge, The Carrick is everything you would expect from a Normandy lodge, a well thought out design incorporating a master bedroom with ensuite, including steam shower and walk in wardrobe. A large 2nd bedroom and optional 3rd bedroom / study.

The Indigo

8-9

The Indigo lodge offers a different perspective, with the kitchen, dining area and lounge all on one side of the building to capitalise on your primary views.

The Helme

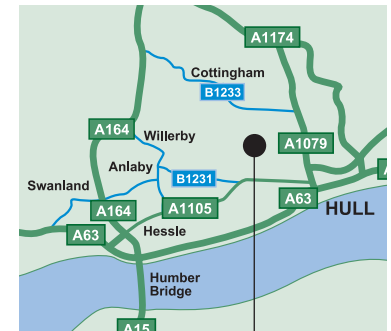
10-11

With a contemporary look, The Helme lodge stands out in any environment. Stylishly finished in timber, UPVC or Canexel, The Helme boasts an exemplary finish built to your specifications by our highly experienced craftsmen.

The Lindeth

12-13

Built like all our models by highly experienced craftsmen you can be sure that The Lindeth is a quality built lodge, offering warmth and comfort in the winter and space and light during the summer months.



The Sycamore 14-15

One of our most popular models, The Sycamore is a very well designed lodge which maximises all of the floor space. Very well positioned windows throughout help to deliver the opportunity to appreciate the views from inside your lodge.

The Coast 16-17

A unique cabin-styled 37' x 12' one or two bedroom holiday home, The Coast combines the features of an up market holiday home with the superior structure of a Normandy lodge. The result is a four season cabin for your all-year breaks.

The Country 18-19

A well-proportioned holiday home, The Country is styled to resemble a traditional country retreat yet features an enviable level of modern fixtures and fittings, plus innovative styling throughout.

General

General specifications	20-21
Features list	22-23
Frequently asked questions	24-25
After sales service	26
Customer quotes	26

Directions to Normandy 27



About us

It's often commented "Are you based in France?" but the reality is far from that. Normandy was established in 1981 in Beverley, East Riding of Yorkshire which is also home to Normandy Barracks.....hence the name. Ten years later the company relocated into purpose built factory premises in Kingston-upon-Hull.

Since then, Normandy have been predominately exporters of holiday homes to distribution chains based in Belgium and Holland and have been responsible for almost 10% of annual UK export unit sales.

However, following a change of ownership in 2003, there was a new strategic plan to have a greater presence in the UK market. To achieve this plan it was necessary to expand the factory from 8,000 sq ft to today's 20,000sq ft. In addition, the workforce has grown threefold. Incidentally, three members of the workforce have celebrated 25 year service awards. The firm is family oriented with Gary and Lesley Cooper as co-directors and each of their three sons actively involved in the day to day operations.

The additional facilities have allowed the company to develop new products far beyond the traditional single unit. The company has quickly progressed into twin unit leisure lodges and park homes producing what we feel are the most complete twin unit leisure and residential park homes in the UK and at a competitive price.

Build specification to either Holiday Home Standard BS EN 1647 or Residential Park Home Standard BS 3632.

The twin unit range has become more diverse as the company has taken on bespoke client requirements ranging from 28x16 wide to 45x22'3 wide.



Our bespoke design service

We pride ourselves on our upfront and flexible approach. With all Normandy lodges being produced to order we welcome the opportunity for you to give us your ideas on how you would like your lodge designing. Nothing is set in stone and providing it will not breach regulatory requirements we will do everything we can to design and build your home to your specification. Its your home and we want it to be how you want it.

Disabled access lodges

The company has a wealth of experience in providing special facilities for users with disabilities, not only wide access provisions but individually designed bedrooms, bath and/or shower wet rooms.

The Carrick

Lodge size: 45' x 22'3"





Overview

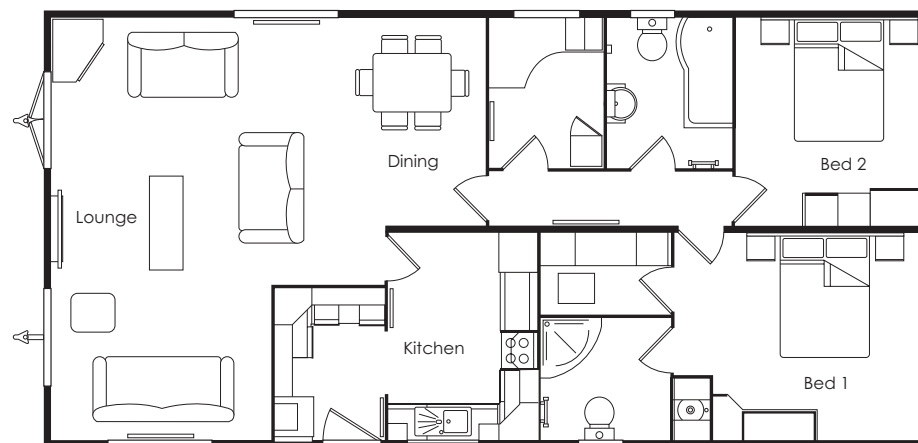
Our flagship lodge, The Carrick is everything you would expect from a Normandy lodge, a well thought out design incorporating a master bedroom with ensuite, including steam shower and walk in wardrobe. A large 2nd bedroom and optional 3rd bedroom / study, together with a generously proportioned lounge area which includes a 42 inch flat screen television and feature electric fire.

The modern fully fitted kitchen includes stainless steel integrated oven and hob, microwave, dishwasher, washer/dryer, integrated fridge-freezer, wine cooler, chimney extractor fan and a stylish oval non-scratch sink. The Carrick is wall papered throughout giving a lodge you could live in all year round in complete luxury. A fully surround sound music system makes this a lodge with all the latest mod cons along with a feel of a homely residential property.

Standard features

- Domestic double glazing throughout
- Choice of 3 exterior cladding options – timber, UPVC cladding or Canexel
- Vaulted ceiling throughout
- Gas central heating
- Extra warm insulation package throughout
- Ensuite bathroom off master bedroom with a top of the range steam shower
- Feature electric fire in lounge
- Luxury 3 piece leather suite & chenille
- 42 inch flat screen TV
- Luxurious walk in wardrobe
- Free standing solid oak furniture
- Wall papered throughout
- Interior and exterior lighting including LED lighting to front
- Fully lined curtains and curtain poles
- Ipod surround sound music system

Standard floor plan



Lodge size: 45' x 22'3" • 2 Bedrooms with optional 3rd bedroom / study



The Indigo

Lodge sizes: 38' x 20' • 40' x 20' • 45' x 22'





Overview

The Indigo lodge offers a different perspective, with the kitchen, dining area and lounge all on one side of the building to capitalise on your primary views.

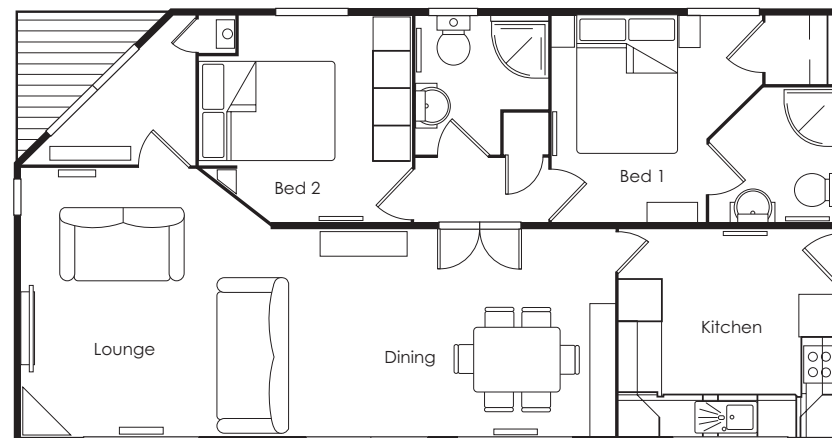
The master bedroom comes with a wall mounted flat screen TV, and an en-suite shower room. Bedroom two boasts ample proportions and fitted wardrobes. As with all our lodges, The Indigo can be finished in UPVC, timber or a Canaxel finish to minimise ongoing maintenance.

With its spacious and modern interior you get the holiday home you have always desired. The modern fully fitted kitchen includes stainless steel integrated oven and hob, microwave, dishwasher, washer/dryer, fridge freezer, extractor fan and stylish sink which offers you modern and stylish living. The leather sofas and solid oak dining furniture complete the luxurious feel.

Standard features

- Domestic double glazing throughout
- Choice of 3 exterior cladding options – timber, UPVC cladding or Canaxel
- Vaulted ceiling to lounge, dining and kitchen area
- Side facing patio doors and elegant entrance lobby
- Gas central heating
- Extra warm insulation package throughout
- Ensuite bathroom to master bedroom
- Stylish laminate wood flooring
- Feature electric fire in lounge
- Luxury suite
- 2 flat screen TV's included (lounge and bedroom)
- Fitted wardrobes in all bedrooms
- Free standing solid oak furniture
- LED lighting to front
- Fully lined curtains and curtain poles

Standard floor plan



Lodge size: 38' x 20' • 2 Bedrooms
40' x 20' • 2 Bedrooms
45' x 22' • 3 Bedrooms



The Helme

Lodge sizes: 36' x 20' • 38' x 20' • 40' x 20'





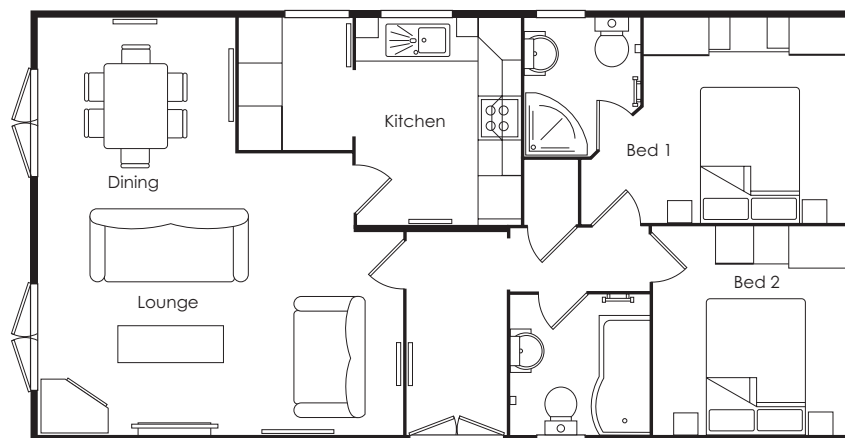
Overview

With a contemporary look, The Helme lodge stands out in any environment. Stylishly finished in timber, UPVC or Canexel, The Helme boasts an exemplary finish built to your specifications by our highly experienced craftsmen. With two big french doors and large bay windows the lounge is light and airy, also making the most of your views. A spacious and modern interior gives you the holiday home you have always promised yourself. A modern kitchen with stainless steel integrated oven and hob, spacious en-suite bathroom and fitted bedroom furniture, leather sofas and solid oak dining furniture – The Helme lodge offers a superior level specification, with the finishing touches you would expect in your home.

Standard features

- Domestic double glazing throughout
- Choice of 3 exterior cladding options – timber, UPVC cladding or Canexel
- Vaulted ceiling to lounge, dining and kitchen area
- Two french doors to front
- Gas central heating
- Extra warm insulation package throughout
- Ensuite bathroom to master bedroom
- Fully fitted kitchen including fridge freezer, hob, built in oven and chimney extractor fan
- Feature electric fire in lounge
- Luxury leather suite
- Flat screen TV included
- Fitted wardrobes in all bedrooms
- Stylish solid oak furniture
- LED lighting to front
- Fully lined curtains and curtain poles

Standard floor plan



Lodge size: 36' x 20' • 2 Bedrooms
38' x 20' • 2 Bedrooms
40' x 20' • 2 Bedrooms



The Lindeth

Lodge size: 40' x 16'





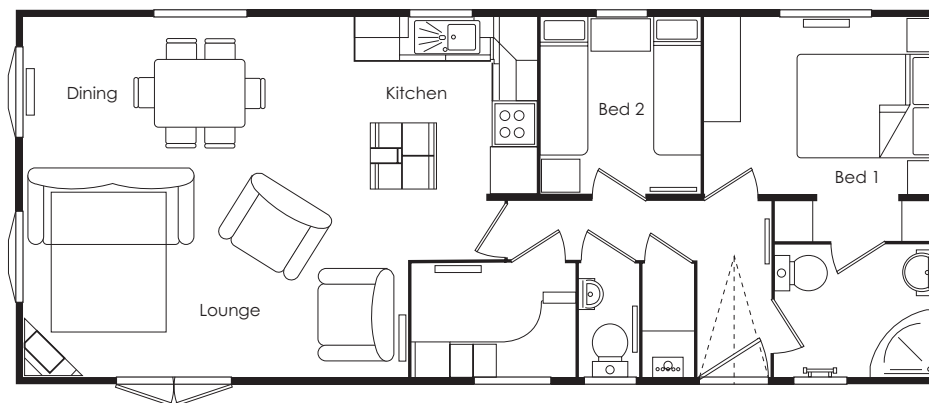
Overview

Built by our highly experienced craftsmen you can be sure that The Lindeth is a quality built lodge, offering warmth and comfort in the winter and space and light during the summer months. Designed to maximise the floor space, this really is a home from home without exceeding your budget and yet one that could be lived in with extreme comfort all year round.

Standard features

- Domestic double glazing throughout
- Choice of 3 exterior cladding options – timber, UPVC cladding or Canaxel
- Vaulted ceiling throughout
- Gas central heating with economic condensing combination boiler
- Master bedroom with ensuite
- Laminate flooring to lounge & kitchen
- Feature electric fire in lounge
- Luxury 3 piece suite
- Flat screen TV
- Fully furnished
- Office complete with contemporary desk and chair
- Interior and exterior lighting pack
- Fully lined curtains and curtain poles
- Fully fitted kitchen including fridge freezer, hob, built in oven and chimney extractor fan

Standard floor plan



Lodge size: 40' x 16' • 2 or optional 3rd bedroom or study



The Sycamore

Lodge sizes: 28' x 16' • 30' x 16' • 32' x 16' • 36' x 16'





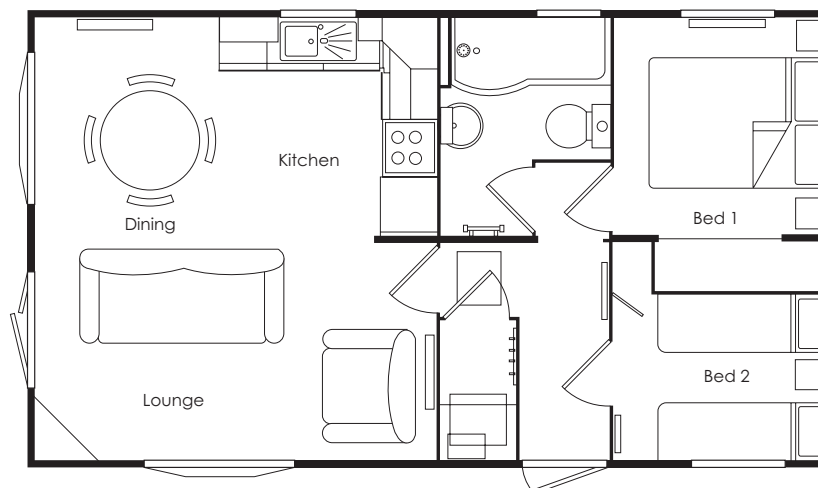
Overview

One of our most popular models The Sycamore is a very well designed lodge which maximises all of the floor space. Very well positioned windows throughout the lodge help to deliver the opportunity to appreciate the views from inside your lodge. With a contemporary open plan fully fitted kitchen complete with a tall fridge freezer and stainless steel integrated oven and hob, The Sycamore offers synergy and simplicity. Including luxury suite as standard the lounge radiates a modern yet warm feel throughout.

Standard features

- Domestic double glazing throughout
- Choice of 3 exterior cladding options – timber, UPVC cladding or Canaxel
- Vaulted ceiling to lounge/kitchen and dining area
- Gas central heating
- 'P' shaped bath with glass shower screen
- Feature electric fire in lounge
- Luxury leather suite
- Flat screen TV
- Wardrobe with mirrored sliding doors
- Fully furnished
- Interior and exterior lighting pack
- Fully lined curtains and curtain poles
- Washer/dryer machine
- Fully fitted kitchen including fridge freezer, hob, built in oven and chimney extractor fan

Standard floor plan



Lodge size: 28' x 16' • 2 Bedrooms
30' x 16' • 2 Bedrooms
32' x 16' • 2 Bedrooms
36' x 16' • 2 Bedrooms



The Coast

Lodge size: 37' x 12'





Overview

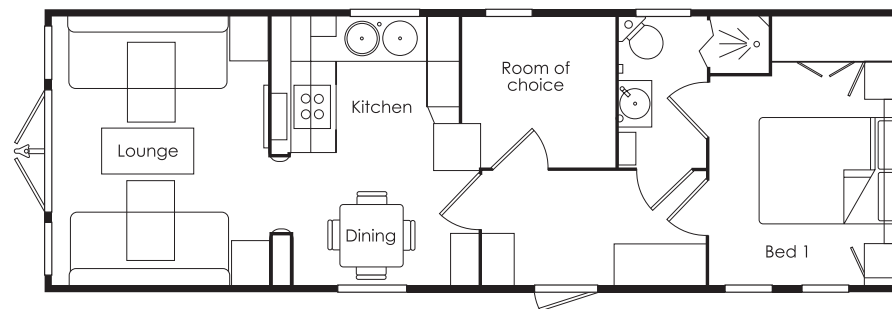
A unique cabin-styled 37' x 12' one or two bedroom holiday home, The Coast combines the features of an up market holiday home with the superior structure of a Normandy lodge. The result is a four season cabin for your all-year breaks. We also offer a room of choice where we can design a room for your individual requirements.

A well-proportioned holiday home, The Coast evokes the seaside theme with a nostalgic beach hut look but with the benefit of all mod cons and luxuries.

Standard features

- Domestic double glazing throughout
- Choice of 3 exterior cladding options – timber, UPVC cladding or Canexel
- Front patio doors
- Gas central heating
- Extra warm insulation package throughout
- A room of choice i.e. study, 2nd bedroom, music room, office etc
- Carpet with underlay
- Feature electric fire in lounge
- Flat screen TV
- Free standing solid oak furniture
- Velux skylight windows (remote control optional)
- Modern and innovative design features
- Fully fitted kitchen including fridge freezer, microwave, dishwasher, hob, built in oven and chimney extractor fan

Standard floor plan



Lodge size: 37' x 12' • 1 or 2 Bedrooms



The Country

Lodge size: 37' x 12'





Overview

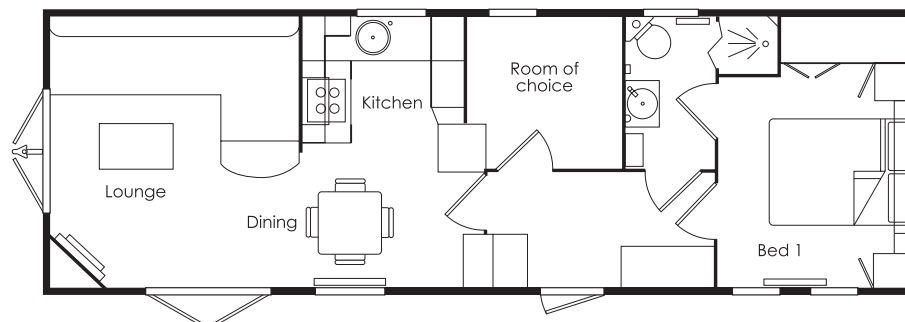
A well-proportioned holiday home, The Country is styled to resemble a traditional country retreat yet features an enviable level of modern fixtures and fittings, plus innovative styling throughout.

Additional insulation and domestic quality heating ensure that The Country is a year-round destination in its own right.

Standard features

- Domestic double glazing throughout
- Choice of 3 exterior cladding options – timber, UPVC cladding or Canexel
- Front and side patio doors
- Gas central heating
- Extra warm insulation package throughout
- Modern and innovative design features a room of choice i.e. study, 2nd bedroom, music room, office etc
- Carpet with underlay
- Feature electric fire in lounge
- Flat screen TV included
- Free standing solid oak furniture including leather corner suite as standard
- Fully fitted kitchen including fridge freezer, microwave, dishwasher, hob, built in oven and chimney extractor fan

Standard floor plan



Lodge size: 37' x 12' • 1 or 2 Bedrooms



General specification





Roof

Preformed aggregate coated aluminum tile system, available in several colours, fixed to treated timber battens over sarking felt. Battens are secured to nail timber roof trusses at 17 degrees meeting grade A snow loading. Ceiling board with decorative paper and coving. Roof void is insulated with fiberglass and ventilated via eaves, which are of various widths. All rainwater down-pipes and gutters are in PVCU. Fascias and bargeboards are PVC with a wood grain texture finish.

Structure

All models are designed in accordance with BS.3632: (2005) or BS EN 1647.

Subframe

We use a conventional Park Home Style or a Heavy Duty Lattice Work Chassis depending on the specific model. The structure includes siting wheels, detachable tow bar and levelling jacks. All subframes are coated with bitumastic anti-corrosive treatment.

Walls

We use various exterior cladding depending on models and customers choice. Knotched structural timber studworks with members of appropriate sizes and spacing incorporating insulation to give added strength. Giving an overall thickness off 100mm. Internal wall materials are used with all BS 3632 models utilising 50mm Kingspan and all BS 1647 models using various polystyrene exteriors. All internal faces comply to BS.476 giving a minimum class III spread of flame.

Floor

High density 18mm thick flooring grade chipboard screwed and nailed to structural timber floor joints of appropriate sizes and spacing, which are securely bolted to the subframe. Various floor finishes are available as indicated in the decor specifications. Floor deck insulated with 12mm Dualter in our BS 1647 models or a 35mm Composite polystyrene Sandwich with 11mm O.S.B in our BS 3632 models.

Windows and doors

All Normandy PVCU frames are fitted with K-glass double glazing. Various designs are available such as square leading, Georgian bar and feature door panels. These are available as optional extras where not standard.

Plumbing

All plumbing is to BS.6700. Sanitary fittings including wash hand basin and WC are domestic quality glazed pottery complete with taps and fittings.

Shower cubicles

When fitted (see plan layout) are complete with riser bar, shower head and glazed door.

Baths

Synthetic material, complete with taps, bath panel and fittings.

Kitchen sink

Complete with drainer, taps and fittings.

Waste pipes

Plastic pipes terminating below floor level, directly below fitting, for site connection to local bylaw regulations. Hot and cold water services lagged foam water pipes

Hot and cold water services

Lagged foam water pipes

Central heating

Electric feature fire to the lounge is standard in all models. A condensing gas combination boiler provides central heating for radiators and domestic hot water supply as standard for BS 3632. A combination boiler is supplied in BS 1647 models

Electric's

All electrical insulations are designed, wired, inspected and tested to BS 7671 (17th edition) Units are designed to be powered by 230 v 50 Hz supplies (load varying on the specific model.) Mains board are fitted with R.C.D's and M.C.B protection. Sockets outlets are powered on a 32amp M.C.B ring main. Boilers supplied by 16amp M.C.B. Lighting supplied by 6amp M.C.B Number and location of power points, light fittings, consumer units, etc. as shown on standard floorplans.

Furniture package

All Normandy lodges have high quality furniture installed as standard.

Features check list

	Carrick	Indigo	Helme	Lindeth	Sycamore	Coast	Country
EXTERIOR							
Light by main door	S	S	S	S	S	S	S
Light by secondary door	S	S	S	S	S	S	S
Domestic standard double glazing	S	S	S	S	S	S	S
LED lights to the front	S	S	S	S	O	O	O
Velux skylight window	O	O	O	O	O	S	O
INTERIOR							
Smoke detector	S	S	S	S	S	S	S
Carbon monoxide detector	S	S	S	S	S	S	S
Gas central heating	S	S	S	S	S	S	S
Carpet underlay & grippers	S	S	S	S	S	S	S
Ceramic tiles to the kitchen	O	O	O	O	O	O	O
Ceramic tiles to the bathroom	O	O	O	O	O	O	O
Professionally wallpapered throughout	S	S	O	O	O	NA	NA
Laminate flooring	O	S	O	S	S	NA	NA
ipod surround sound music system throughout	S	O	O	O	O	O	O
LOUNGE							
Suite in fabric	O	O	O	S	O	S	O
Suite in leather	S	S	S	O	S	O	S
Feature fire	S	S	S	S	S	S	S
Flat screen TV	S	S	S	S	S	S	S
DVD	S	NA	NA	NA	NA	NA	NA
Space for DVD	NA	S	S	S	S	S	S
DINING ROOM							
Oak table & chairs	S	S	S	S	S	S	S
BEDROOMS							
TV socket	O	S	O	O	O	O	O
Flat screen TV	O	S	O	O	O	O	O
Fitted furniture	S	S	S	S	S	S	S
Overbed storage	O	O	O	O	O	S	S
Bunk beds	O	O	O	O	O	O	O
Twin beds in second bedroom	O	O	O	S	S	NA	NA
Walk in wardrobe	S	S	NA	S	NA	NA	NA



	Carrick	Indigo	Helme	Lindeth	Sycamore	Coast	Country
BATHROOM							
WC, bath & basin	S	O	S	O	S	NA	NA
Vanity unit	S	S	S	S	S	S	S
Extractor fan	S	S	S	S	S	S	S
Shaver light or socket	O	O	O	O	O	O	O
Mirror	S	S	S	S	S	NA	NA
Illuminated mirror	O	O	O	O	O	S	S
Heated towel radiator	S	S	S	S	S	S	S
EN-SUITE							
WC, shower & basin	S	S	S	S	NA	S	S
Vanity unit	S	S	S	S	S	S	S
Steam shower	S	O	O	O	O	NA	NA
Extractor fan	S	S	S	S	S	S	S
STUDY							
Leather chair	S	NA	NA	S	NA	O	O
Desk	S	NA	NA	S	NA	O	O
KITCHEN							
Hob, oven & hood	S	S	S	S	S	S	S
Integrated microwave	O	S	O	O	O	S	S
Integrated fridge/freezer	S	S	S	S	S	S	S
Integrated washing machine	O	S	O	O	O	O	O
Space for dishwasher	O	O	O	O	O	O	O
Integrated dishwasher	S	S	O	O	O	O	O
Integrated wine chiller	S	O	O	O	O	O	O
UTILITY							
Space for washing machine	O	O 45 X 22'3 ONLY	O	O	O	NA	NA
Integrated washing machine	O	O 45 X 22'3 ONLY	O	O	O	NA	NA
Free standing washer/dryer	S	S 45 X 22'3 ONLY	S	S	S	NA	NA

Please note: Although this is a feature check list any special requirements were possible will be catered for. All our lodges are built to order and nothing is set in stone.

Key: S Standard O Optional NA Not applicable

Frequently asked questions

Are Normandy Holiday Homes headquarters in France?

No - The name comes from an army barracks which were near our original headquarters in Beverley, East Yorkshire called Normandy Barracks. Since we formed in 1981 we have been based and all our manufacturing has been undertaken in East Yorkshire.

Why have I never heard of Normandy Holiday Homes?

Although we have been going strong as a company for over 27 years, we started producing for the UK market 3 years ago. Previously everything was for the export market, predominately Holland and Belgium.

So Normandy Holiday Homes mass produce for the export market?

No - We are a relatively small manufacturing company and all of our lodges are made to order with everything being thoroughly checked by our highly experienced craftsmen (Some of whom have been with us for 25 years) before being dispatched to our customers.

Where can I put a Normandy lodge?

The lodge can be positioned on any land that has planning consent for a holiday caravan pitch or elsewhere where a holiday caravan is sited and needs to be replaced.

On a holiday park?

Yes - If you would like to purchase a Normandy lodge we can provide you with an existing holiday park or advise you of any up and coming developments of Normandy lodges and their locations.

We also have the British Standard that is recommended and is vitally important not least for your peace of mind.

Holiday Home Standard BS EN 1647

On residential park homes?

Yes - Our lodges have passed the relevant British Standards and we do have a number of lodges available on sites around the country or we can produce a lodge to your individual specification.

Residential Park Home Standard BS 3632

All Normandy lodges are manufactured to the highest standards. They can be built to British Standard 3632 Residential Park Homes Specification. This sets out stringent requirements regarding thermal insulation, sound insulation, safety, construction and durability. The National Park Homes Council makes 3 unannounced visits per year and 1 full inspection to the factory to ensure that the standards set out in BS3632 are being met.

Abroad?

Yes - The lodges can comply with all the relevant European Standards and can be exported around the world.

Can the lodge be used by the mobility impaired?

Yes - All our lodges are built to order. We have produced various models catering to the individuals needs. From electrical hoists and power operated baths to full wet rooms. We deliver what you need.

How do I buy one?

Feel free to contact us directly and we can get the ball moving by providing you with the relevant advice and direction to make your dream a reality.

I have a few questions that you have not covered

Please pick up the phone, email or fax us and we will do our very best to answer any other questions you may have.



After sales & customer quotes



Our services

We are very proud of our company and our reputation. We do everything to keep our customers happy from the moment you begin looking for your lodge up until your lodge is complete. We do not finish there though as any teething problems you may have once your lodge is completed is dealt with efficiently by our highly experienced after sales team. We pride ourselves on the personal touch of a small and progressive company with all our lodges being made to order and to each individual specification.

Design and planning

We have specialist consultants who can assist you with your ideas and help to put them into production, with expert planning and layouts to your own specification.

Customer quotes

“ Fantastic products, great design features and the best company I have ever worked with for aftersale queries. It is a pleasure to work with and be associated with Normandy Holiday Homes. ”

Craig Russell, Owner, Beetham Caravan Park

“ Buying our most recent Normandy lodge was the best thing I have done in my married life. ”

Valerie Smith, Thornton Cleveleys, Lancashire

“ We have purchased a bespoke disabled access holiday home from Normandy. We found the company to be very efficient, flexible to our specific needs and highly professional throughout. They have in turn produced a holiday home that we are delighted with. ”

John & Pam Milner, Preston, Lancashire

Transportation

We work with lodge and holiday home parks to make the siting of your lodge meet your expectations. We can also provide quotes for transportation if required.

After sales service

You are guaranteed to get a swift response in the unlikely event of any rectification problems that may arise. You can also have peace of mind that anyone you do speak to in our small team are highly qualified, helpful, experienced and skilled.

All our lodges are manufactured in the UK and we are happy for potential customers to contact us directly, even to arrange a visit to our company and watch our highly skilled craftsmen first hand.

“ We both agree we would never buy a Holiday Home from anyone else. ”

Malcolm & Edith Taylor, Accrington, Lancashire

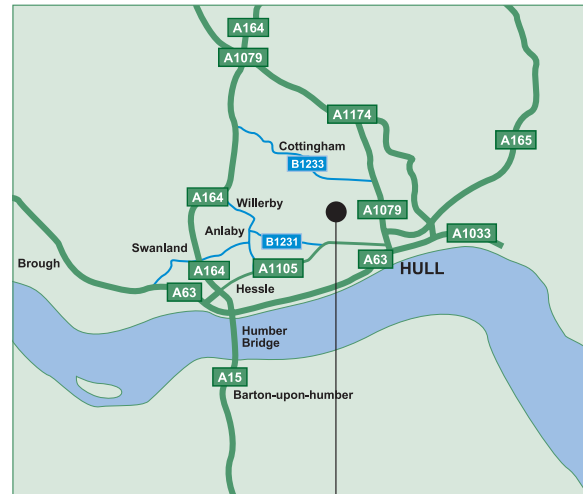
“ The distinctiveness for me, of Normandy leisure and residential homes is that quality fixtures and fittings are used, nothing is done on the cheap. ”

Park & Holiday Homes Magazine February 2009

“ We have been buying Normandy Holiday Homes for over ten years and as an organisation that buy a lot of holiday homes we cannot speak highly enough of their products, staff and the company. ”

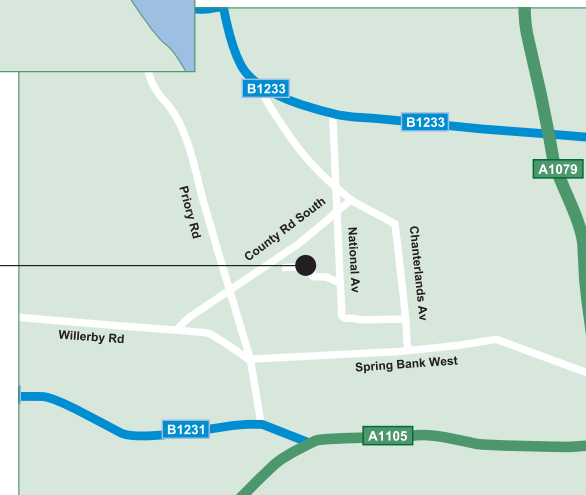
Stefan Ledent, Degotte, Belgium

Directions to Normandy



normandy
holiday
homes 

T: 01482 475100 F: 01482 494301
Bontoft Avenue, Hull, East Yorkshire,
HU5 4HF, United Kingdom.



YOUR LOCAL NORMANDY DISTRIBUTOR



Normandy Holiday Homes

T: 01482 475100 F: 01482 494301

E: info@normandy-holiday-homes.co.uk

Bontoft Avenue, Hull, East Yorkshire, HU5 4HF, United Kingdom.

www.normandy-holiday-homes.co.uk



Normandy Holiday Homes reserves the right to introduce changes in the specification, design and price where circumstances beyond their control may occur. Whilst every possible step is taken to ensure this brochure is correct at the time of print, it should be seen as a guide to the Normandy Holiday Homes range. Not all items and props illustrated are included, please contact Normandy Holiday Homes for details. All rights reserved.